

CAN YOU VOTE BY MAIL?

You can vote by mail if you are in one of the following situations:

- Your domicile is located in the municipality and you are unable to travel for health reasons. Your caregiver domiciled at the same address can also vote by mail.
- You are in isolation as ordered or recommended by public health authorities because you:
 - returned from a trip abroad within the last 14 days;
 - were diagnosed with COVID-19 and you are still considered a carrier of the disease;
 - are showing COVID-19 symptoms;
 - have been in contact with a suspected or confirmed case of COVID-19 within the last 14 days;
 - are waiting for a COVID-19 test result.
- To vote by mail, you must make an application **on or before Wednesday, October 27, 2021**.
- Completed ballot papers must be received at the returning officer's polling station **on or before Friday, November 5, 2021, at 4:30 p.m.**
- If you are eligible for voting by mail, you can also seek a change to the list of electors in writing.

Ask your returning officer for more information.

FOUR HOURS TO VOTE, THAT'S YOUR RIGHT!

On Election day, your employer must ensure that you have **four consecutive hours** to vote.



ANY QUESTIONS?

For more information, contact the office of the returning officer of your municipality.

Tel.:

Extension:

MUNICIPALITIES WITH 5,000 OR MORE INHABITANTS

ELECTORAL CONTRIBUTIONS

If you are an elector, you can donate up to \$100 per year to each party and each authorized candidate. In a general election year, you can make an additional \$100 contribution to each of the parties and authorized independent candidates. Therefore, your allowable total annual contribution as an elector is \$200 for each of the parties and authorized independent candidates. A candidate can also make an additional contribution of \$800 to himself or herself upon the acceptance of the filing of his or her nomination paper (for a total of \$1,000 for the election year). You must make your contributions to the official representative or to a person who holds a canvasser's certificate. This person will give you a receipt; sign it.

If you are the sole owner of an immovable in an individual capacity or if you have been occupying a business establishment for at least 12 months, you can make a contribution even if your domicile is not located in the municipality.

Only one of the co-owners of an immovable or of the co-occupants of a business establishment can make a contribution. They must designate this person with a power of attorney, available on the Élections Québec website, signed by the majority of them and email it to contribution-municipal@electionsquebec.qc.ca before the contribution is made by the designated person.

For more information on contributions, consult the Élections Québec website at electionsquebec.qc.ca.

CONTROL OF ELECTION EXPENSES

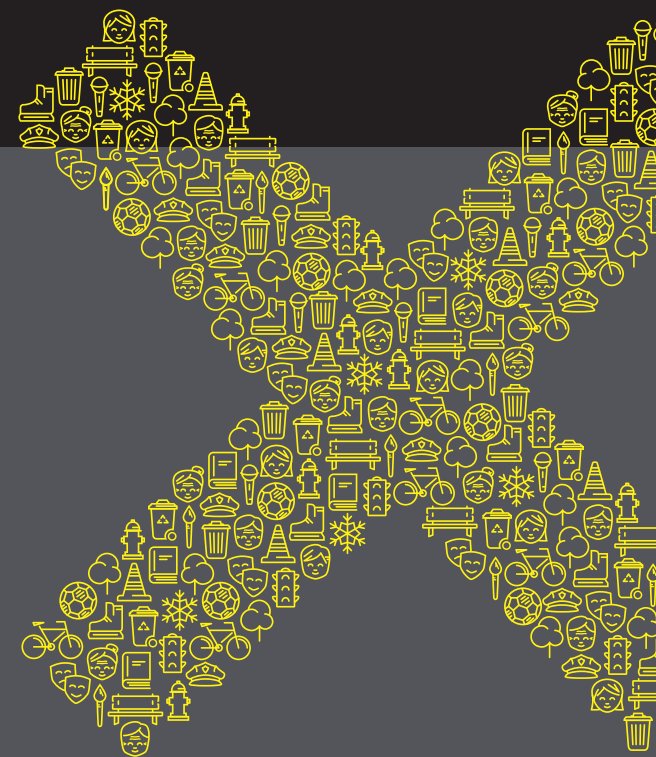
Election expenses are limited based on the number of electors entered on the list of electors. Only the official agent of a party or an authorized independent candidate can incur these expenses. This person will be required to prepare a return including all election expenses he or she incurred. He or she will give the return to the treasurer of the municipality.

For more information on election expenses, consult the Élections Québec website at electionsquebec.qc.ca.

GENERAL ELECTION OF NOVEMBER 7, 2021

Elector's manual

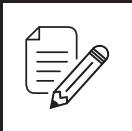
Here is what you need to know to vote



 **élections Québec**

A general election will be held in your municipality on Sunday, November 7, 2021.

TO VOTE, you must:



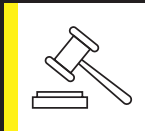
Be entered on the list of electors



Be 18 years or older



Be a Canadian citizen*

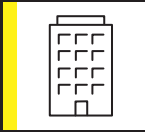


Not be under curatorship¹ or deprived of your election rights*



- Be domiciled in the municipality*
- Have been living in Québec for six months*

OR



Have been the owner of an immovable or the occupant of a business establishment for at least 12 months*

***AS AT SEPTEMBER 1, 2021**

ARE YOU ENTERED ON THE LIST OF ELECTORS?

To vote, you must be entered on the municipal list of electors.

You can check if you are entered by consulting the notice of entry sent by your municipality.

CHECK NOW!

On Election day, you will not be able to enter on the list nor change your address.



TO ENTER OR MODIFY YOUR ENTRY

Report to the revision office on the days and times indicated on the notice of entry sent by the municipality.

A relative, a spouse or a person living with you can undertake this step on your behalf.

If you have any questions, please contact your returning officer. His or her contact information is provided on the back of the pamphlet.

DOCUMENTS REQUIRED TO BE ENTERED ON THE LIST OF ELECTORS

To be entered on the list of electors or to change an address, you must present two documents that contain:

- 1 your name and your date of birth (birth certificate, health insurance card, passport, etc.);
- 2 your name and your current domiciliary address (driver's license, telephone or electricity bill, etc.).



TO VOTE

You must establish your identity by presenting one of the following documents:

- a Québec health insurance card;
- a Québec driver's licence;
- a Canadian passport;
- a Certificate of Indian Status;
- a Canadian Armed Forces identification card.



NEED HELP TO VOTE?

The election officers at your polling station are there to help you.

- You can ask for help in marking your ballot paper.
- If you have a visual impairment, you can ask for the template that will help you vote by yourself.
- You can be accompanied by an interpreter if you are deaf or hard of hearing.

On Election day, polling stations are open from 9:30 a.m. to 8:00 p.m.

You can also vote at the advance poll from 9:30 a.m. to 8 p.m. on

THE SANITARY MEASURES in effect at the time of the elections will be respected in all polling stations (wearing of a mask or face covering, physical distancing, disinfection of hands). Every effort will be made to ensure the safety of all present at the polling stations.

You can also use your own pencil or black or blue pen.

1. A person is under curatorship if he or she has been found by a court to be totally and permanently unfit to care for himself or herself and to administer his or her property.